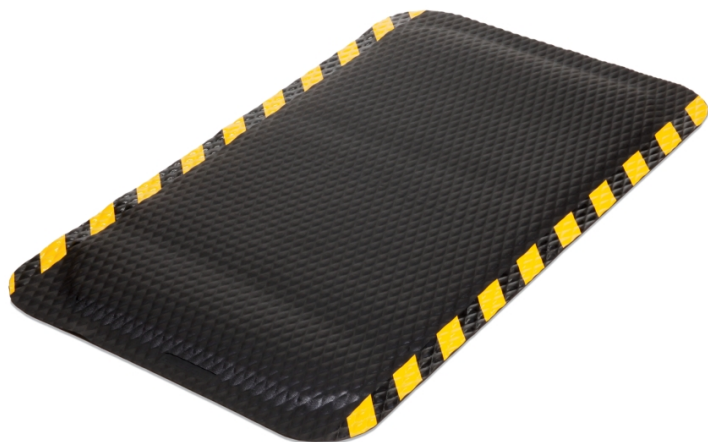


Hog Heaven™ Anti-Fatigue Mat 3' x 5'

FLM423 For Light Chemical Splash, For Light Oil/Grease Splash, 32" x 58" x 0.625"

Tough, textured, nitrile rubber top + 5/8" thick closed-cell cushion = hours of slip-resistant comfort in dry areas.

- Sturdy 100% nitrile rubber surface naturally resists sparks and chemicals
- Premium 5/8"-thick closed-cell nitrile/PVC cushion backing provides all-day comfort
- Curved, beveled edges help prevent tripping and won't crack or curl, even after extended use
- Textured, slip-resistant surface helps improve safety
- Static-dissipative mat is ideal for use around sensitive electronic equipment or machinery



Item#	Description	Dimensions	Weight
FLM423-BYS	Black w/ Yellow Stripe Border,	32" W x 58" L x 0.625" H	13.2 lbs.
FLM423-BK	Black,	32" W x 58" L x 0.625" H	13.2 lbs.

Metric Equivalent:

Item#	Description	Dimensions	Weight
FLM423-BYS	Black w/ Yellow Stripe Border,	81.3cm W x 147.3cm L x 1.6cm H	6 kg
FLM423-BK	Black,	81.3cm W x 147.3cm L x 1.6cm H	6 kg

Specifications

Static-Dissipative	Yes
Drainage Holes	Without Holes
Anti-Slip	Yes
Dimensions	32" W x 58" L x 0.625" H
Chemical Contact	For Light Chemical Splash
Oil/Grease Contact	For Light Oil/Grease Splash
Beveled Edge	Yes
Brand	M&A Matting
Grit Surface	No
Safe for Welding Areas	Yes

Sold as	1 each
Weight	13.2 lbs.
# per Pallet	30
Composition	Top Coat - Nitrile Rubber Cushion - Closed-Cell Nitrile Blend
Application	Dry Applications
UNSPSC	52101510
Pigalog® Page Number	<u>Page 238</u>

Metric Equivalent

Dimensions	81.3cm W x 147.3cm L x 1.6cm H
Weight	6 kg

Technical Information

Certifications, Approvals and Ratings

NFSI Certified

Disclaimers

Nominal Anti-Fatigue Mat Dimensions

Mat sizes are approximate as rubber shrinks and expands in conjunction with temperature and time. Tolerable manufacturing size variance is 3-5%.



One Pork Avenue • Tipton, PA 16684-0304

1-855-493-4647 • Fax: 1-800-621-7447 • newpig.com • hothogs@newpig.com