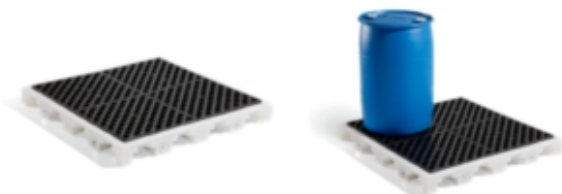


## PIG® Poly Modular Spill Deck

PAK534 Holds (4) 55 gal. Plastic or Steel Drums, 52" x 52" x 5.75", 44 gal. Sump Capacity

Connectable, shared-sump decks let you build up to your required sump capacity to help meet containment regs.



- Patented "flow-through" sump design lets liquid pass freely from one sump to another to help you comply with containment regulations
- Modular design features exclusive bulkhead fittings and predrilled ports to connect to other decks; ready to use as soon as they arrive
- Mix and match the sections you need to fit your space and help meet sump capacity requirements
- Special tools and hardware to connect sections is included with each system
- Low-profile 5.75"H design is easy to load or unload; pumps and funnels are easy to access
- Molded-in sump catches leaks, drips and spills to help keep your storage areas clean and safe
- Low-density polyethylene (LDPE) construction resists UV rays, rust, corrosion and most chemicals
- Textured grating adds traction and lifts out for easy sump access
- Translucent white sidewalls allow easy visual inspection
- We test all of our PIG Containment Deck designs at max load for months to ensure they can handle full capacity at your facility

### Specifications

<b>Holds</b>	(4) 55 gal. Plastic or Steel Drums
<b>Color</b>	Black/White
<b>Dimensions</b>	52" W x 52" L x 5.75" H
<b>Load Capacity UDL</b>	6000 lbs.
<b>Sump Capacity</b>	44 gal.
<b>Double-Stackable Unit</b>	No
<b>Drain</b>	None
<b>Fork Truck Access</b>	No Fork Truck Access
<b>Grates</b>	(2) 48" L x 24" W Grates
<b>Use With Flammables</b>	No
<b>Sold as</b>	1 each

<b>Weight</b>	68 lbs.
<b># per Pallet</b>	10
<b>Composition</b>	Polyethylene
<b>UNSPSC</b>	24101905

## Metric Equivalent

<b>Dimensions</b>	132.1cm W x 132.1cm L x 14.6cm H
<b>Load Capacity UDL</b>	2721.6 kg
<b>Sump Capacity</b>	166.5 L
<b>Weight</b>	30.8 kg

## Technical Information

### Technical Documents

40 CFR 112.7

40 CFR 122.26

40 CFR 264.175



**One Pork Avenue • Tipton, PA 16684-0304**

1-855-493-4647 • Fax: 1-800-621-7447 • [newpig.com](http://newpig.com) • [hothogs@newpig.com](mailto:hothogs@newpig.com)