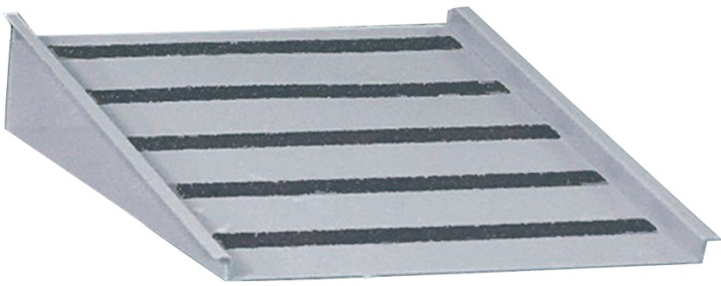


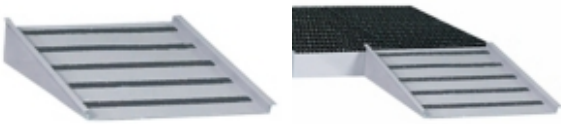
## Steel Loading Ramp

PAK225 For 6.5" H Steel Spill Deck, 1500 lb. Load Capacity



Use a durable ramp made specifically for your PIG® Deck.

- Edge guards guide drum trucks and help keep them from rolling off the sides
- Built to last from heavy-duty steel
- Lip of ramp securely attaches to edge of deck
- Traction strips provide secure footing



### Specifications

|                      |                          |
|----------------------|--------------------------|
| Use With             | 6.5" H Steel Spill Deck  |
| Color                | Gray                     |
| Dimensions           | 36" W x 33" L            |
| Load Capacity UDL    | 1500 lbs.                |
| Usable Width         | 34" W                    |
| Sold as              | 1 each                   |
| Weight               | 70 lbs.                  |
| # per Pallet         | 5                        |
| Composition          | Steel                    |
| UNSPSC               | 24101615                 |
| Pigalog® Page Number | <a href="#">Page 372</a> |

### Metric Equivalent

|                   |                     |
|-------------------|---------------------|
| Dimensions        | 91.4cm W x 83.8cm L |
| Load Capacity UDL | 680.4 kg            |
| Weight            | 31.8 kg             |

### Technical Information

